

Tonal Recall 2024

Set 1 (Soprano/Tenor)

$\text{♩} = 80$ Example 1 (Play the example twice)

Melodic Sightreading 2024

$\text{♩} = 60$ Example #1



$\text{♩} = 60$ Example #2



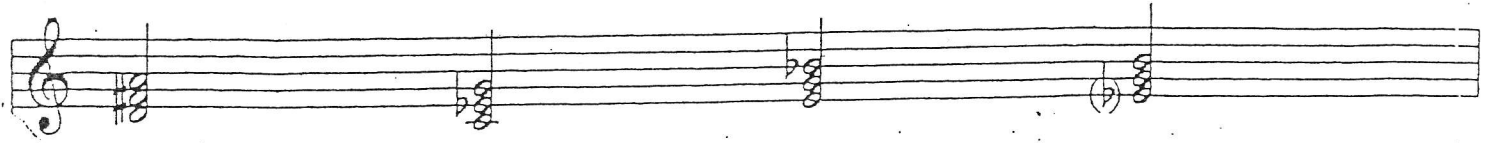
Rhythmic Sightreading 2024

$\text{♩} = 60$



ALL STATE CHOIR 2011-2012 JUDGE'S SHEET

Part 1: Triads



Major

Minor

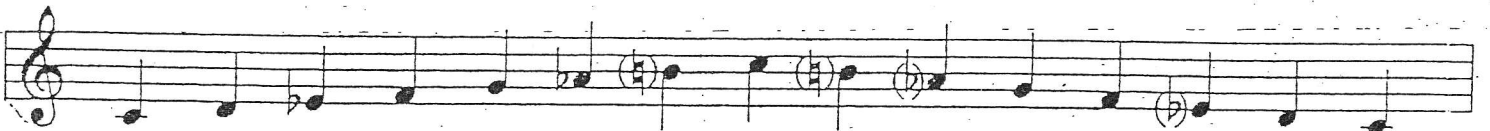
Diminished

Augmented

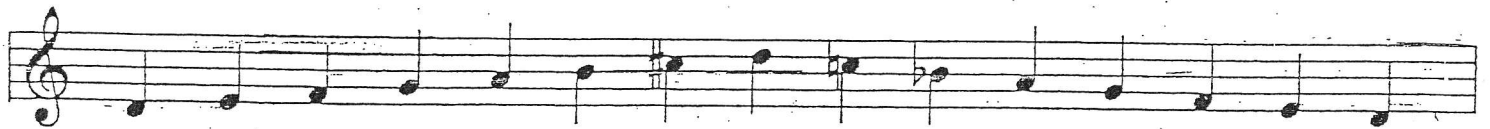
Part 2: Scales (2 points each)



MAJOR

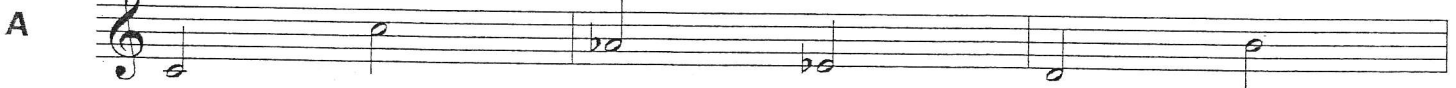


HARMONIC MINOR



MELODIC MINOR

Sung Intervals

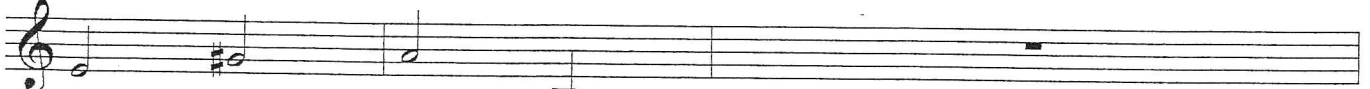


Ascending P8

Descending P4

Ascending M6

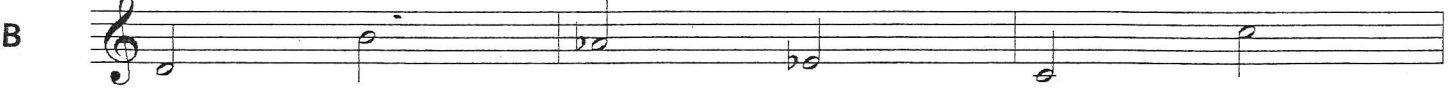
Identified Intervals



Ascending M3

Descending ~~m7~~ m7

Sung Intervals

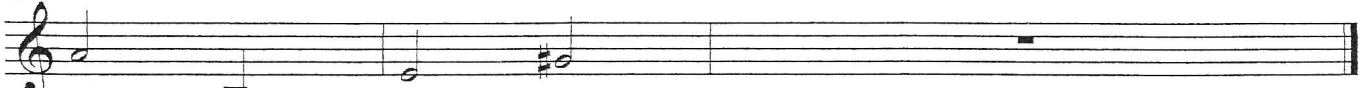


Ascending M6

Descending P4

Ascending P8

Identified Intervals



Descending ~~m7~~ m7

Ascending M3

Melodic Sight Singing #1

Musical notation for Melodic Sight Singing #1, consisting of two staves in 2/4 time with a key signature of one flat (B-flat). The melody is written in the treble clef and the bass line in the bass clef. The melody consists of quarter notes and eighth notes, while the bass line consists of quarter notes.

Melodic Sight Singing #2

Musical notation for Melodic Sight Singing #2, consisting of two staves in 4/4 time with a key signature of one sharp (F#). The melody is written in the treble clef and the bass line in the bass clef. The melody consists of quarter notes and eighth notes, while the bass line consists of quarter notes.

Rhythm

Musical notation for Rhythm, consisting of a single staff in 4/4 time with a key signature of one sharp (F#). The notation shows a sequence of rhythmic patterns: quarter notes, eighth notes, and sixteenth notes, including a triplet of eighth notes.

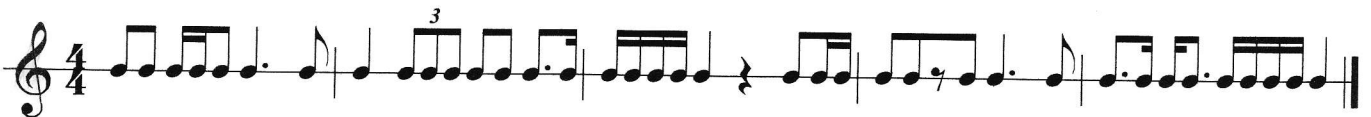
Melodic Sight Singing #1



Melodic Sight Singing #2



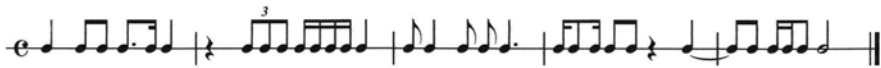
Rhythm



Melodic Sight Reading # 2



Rhythmic Sight Reading



Melodic Sight Singing #1

♩ = 60

Musical notation for Melodic Sight Singing #1, featuring a treble and bass staff in 3/4 time with a key signature of one sharp (F#). The melody consists of eighth and quarter notes.

Melodic Sight Singing #2

♩ = 60

Musical notation for Melodic Sight Singing #2, featuring a treble and bass staff in 4/4 time with a key signature of one sharp (F#). The melody consists of quarter and eighth notes.

Rhythm

♩ = 60

Musical notation for Rhythm, featuring a single staff in 4/4 time. The notation includes eighth notes, a triplet of eighth notes, and a quarter note.

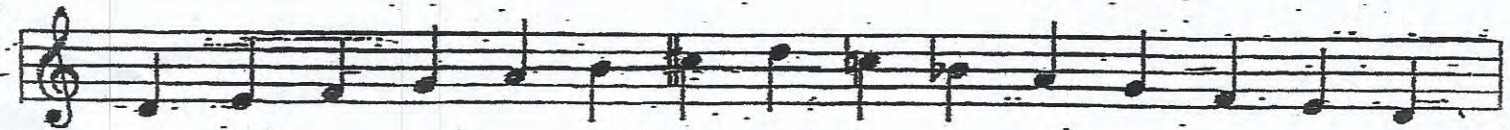
Part 1: Scales (2 points each)



MAJOR

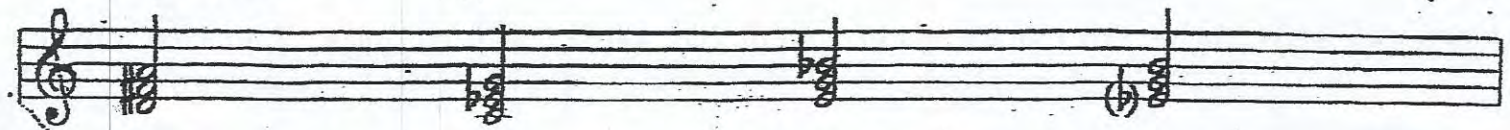


HARMONIC MINOR



MELODIC MINOR

Part 2: Triads



Major

Minor

Diminished

Augmented

Sung Intervals



Descending P octave

Ascending P5

Descending m3

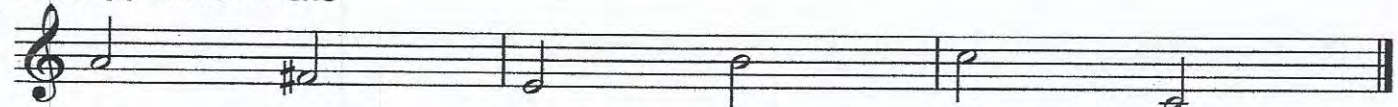
Identified Intervals



Ascending M6

Descending m2

Sung Intervals

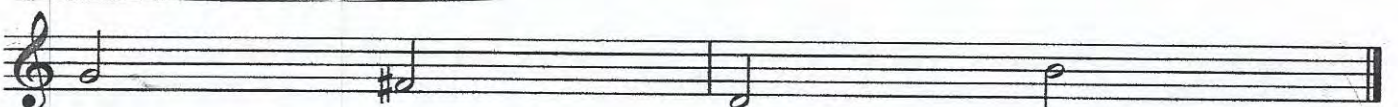


Descending m3

Ascending P5

Descending P octave

Identified Intervals



Descending m2

Ascending M6

Example 1 All State Choir 2023

Example 2 All State Choir 2023

All State Choir Rhythmic Example 2023